

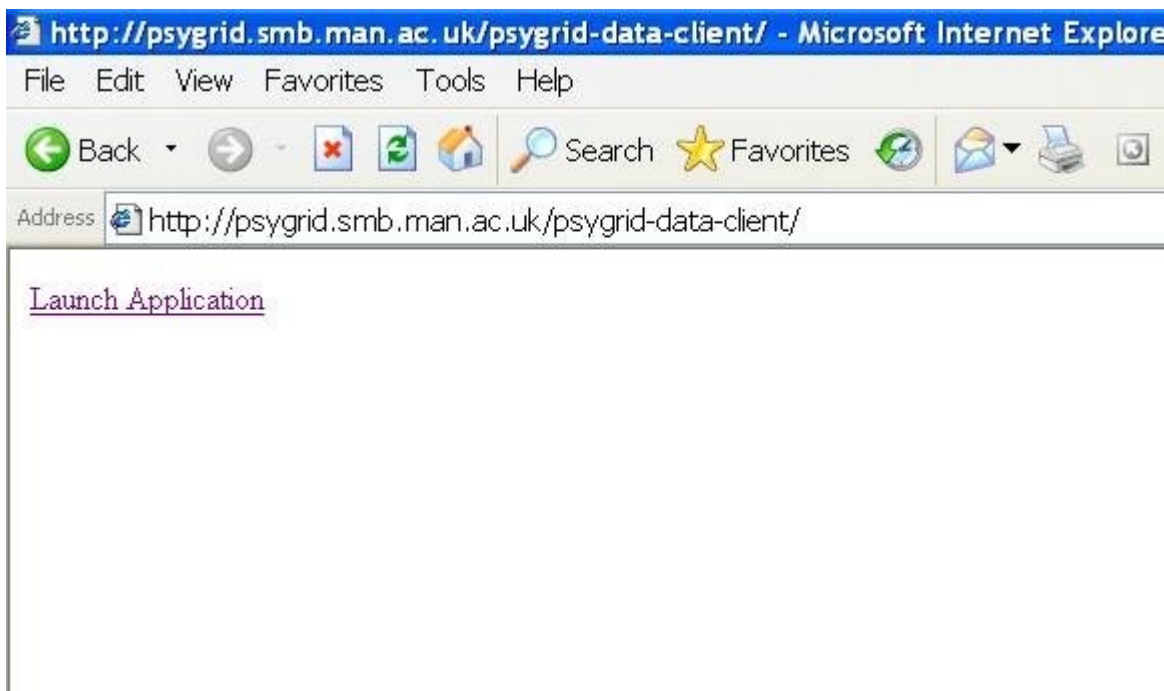
Connecting to the PsyGrid test server over the NHS network

If you are trying to connect to the PsyGrid test/demo server (psygrid.smb.man.ac.uk) over an NHS network connection you may need to perform some additional configuration in order to be able to download and install the PsyGrid software.

How do I know if I need to perform this additional configuration? If you use a proxy server to access the public internet you will probably need to do it.

More basically, if you try to download any of the PsyGrid software and it fails, you will need to do it (assuming Java is installed correctly). What will happen is this:

You click the “Launch Application” link to download/install PsyGrid Software (in this case the CoCoA data collection application)



You will then see this splash screen :



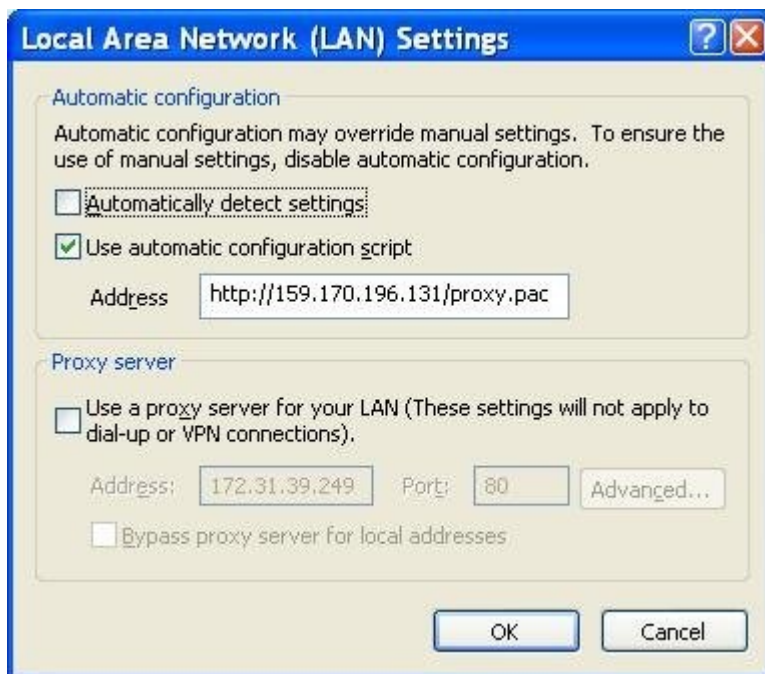
Then you will get this error message:



So, if you see this error, perform the following steps.

1. Finding your proxy server settings

Open Internet Explorer and click on the "Tools" menu. Select "Internet Options...". The "Internet Options" window will open. Select the "Connections" tab, then click on the "LAN Settings" button



Either keep this window open or note down the settings here. If "Use automatic configuration script" is ticked, note down that Address. If "Use a proxy server..." is ticked, note down the Address and Port.

2. Configure the proxy for Java WebStart

To allow Java WebStart to download the PsyGrid software we have to configure its proxy settings in a similar way.

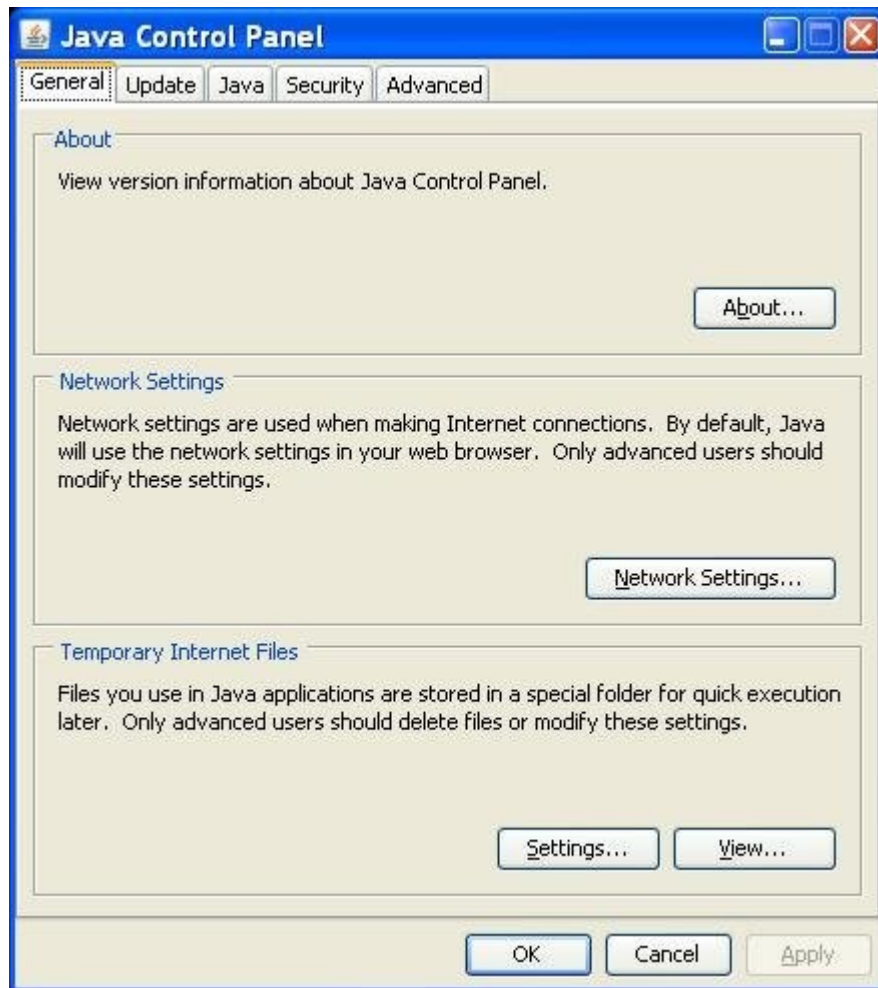
Click the “Start” menu and select “Run...”



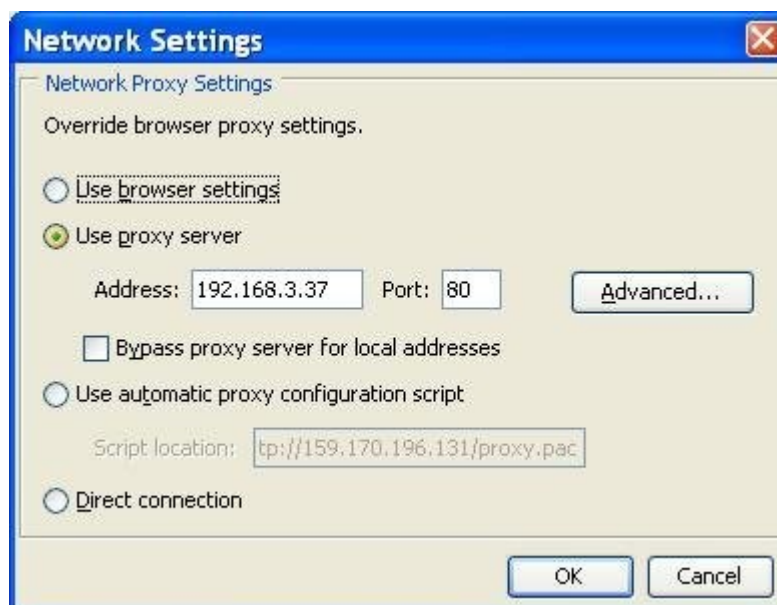
Type “javaws -viewer” into the Run dialog and click OK.



Click “Close” in the “Java Cache Viewer”; the “Java Control Panel” should now be the active window.



Click the “Network Settings...” button. The “Network Settings” dialog will be opened, which is very similar to the dialog from Internet Explorer that we saw in Step 1.



- If in Step 1 “Use automatic configuration script” was ticked, select “Use automatic proxy configuration script” and enter the Address noted earlier into “Script location”
- If in Step 1 “Use a proxy server...” was ticked, select “Use proxy server” and enter the Address and Port into the relevant boxes.

Click “OK” to close the “Network Settings” dialog, then click “Apply” in the “Java Control Panel”.

Now try to download/install the PsyGrid software again. Hopefully it will now work.

3. What if it still doesn't work?

When I was doing this myself I had problems when using the “Automatic proxy configuration script” option for the Java WebStart proxy.

If your Internet Explorer settings are for a Proxy Configuration Script, and using this for the Java WebStart proxy still does not fix the problem try the following:

- Copy and paste the URL of the proxy configuration script into the Address bar of Internet Explorer. Choose to save the file. Then open the file in Notepad or Wordpad, scroll through it and look for a line like this (where each X below represents a number from 0 to 999):

```
else  
    return "PROXY X.X.X.X" ;
```

- Now go through Section 2 above again, but in the “Network Settings” dialog select “Use proxy server” and enter the X.X.X.X numbers here. Enter 80 for “Port”.
- Click OK, then Apply, then try to download/install the PsyGrid software again.

4. Who can I contact to get further help?

We suggest that you contact your local IT support team in the first instance. This document will hopefully give them all the information that they require to configure the Proxy for Java WebStart.

Failing that, or if your IT support need more info, contact PsyGrid support on support@psygrid.org or 0161 2755164.